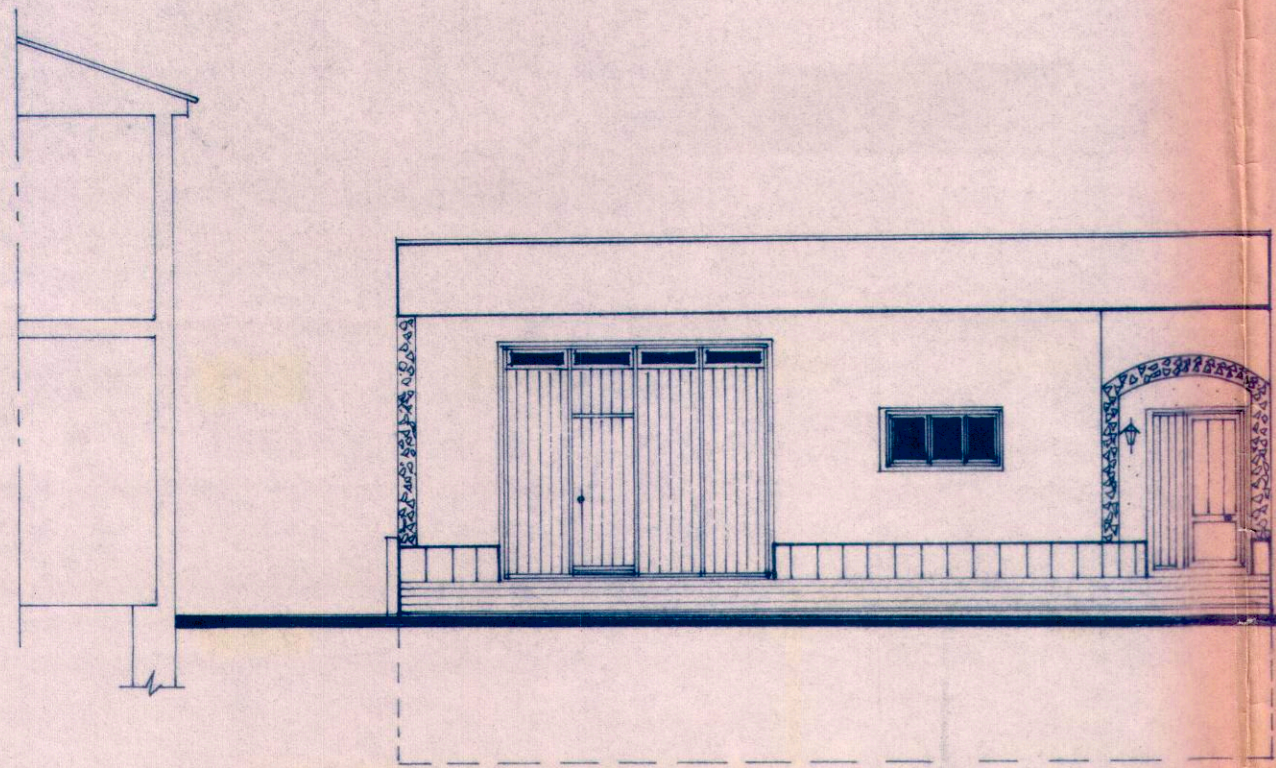
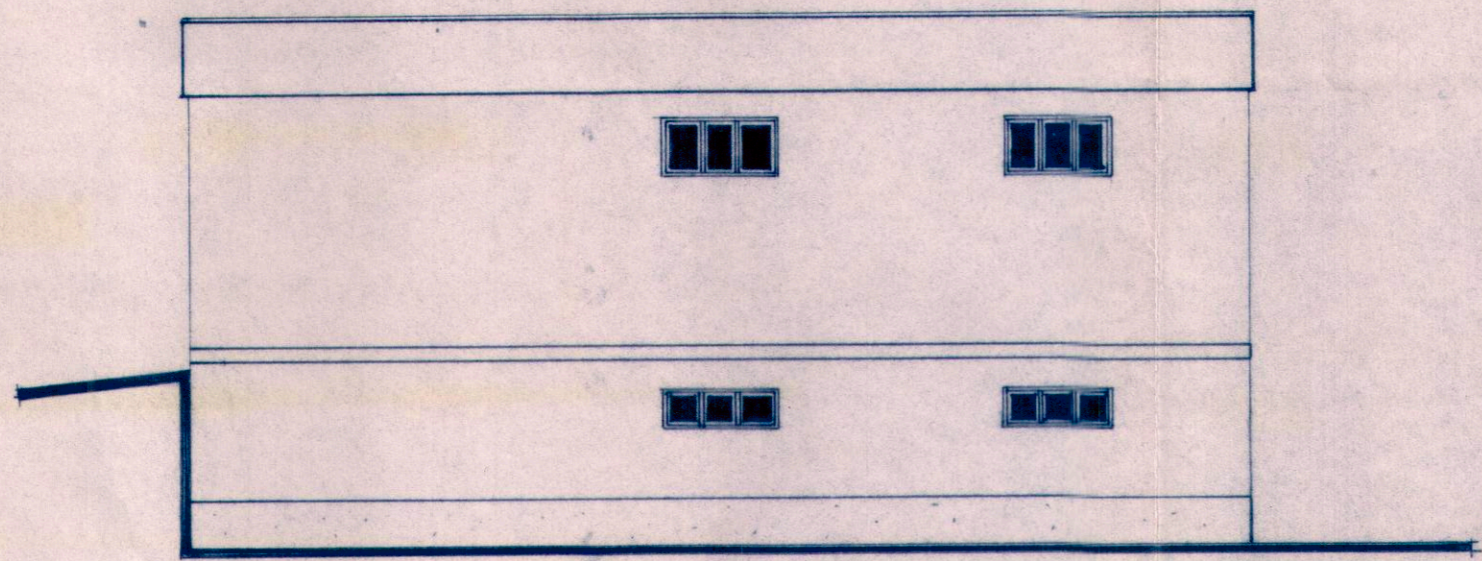


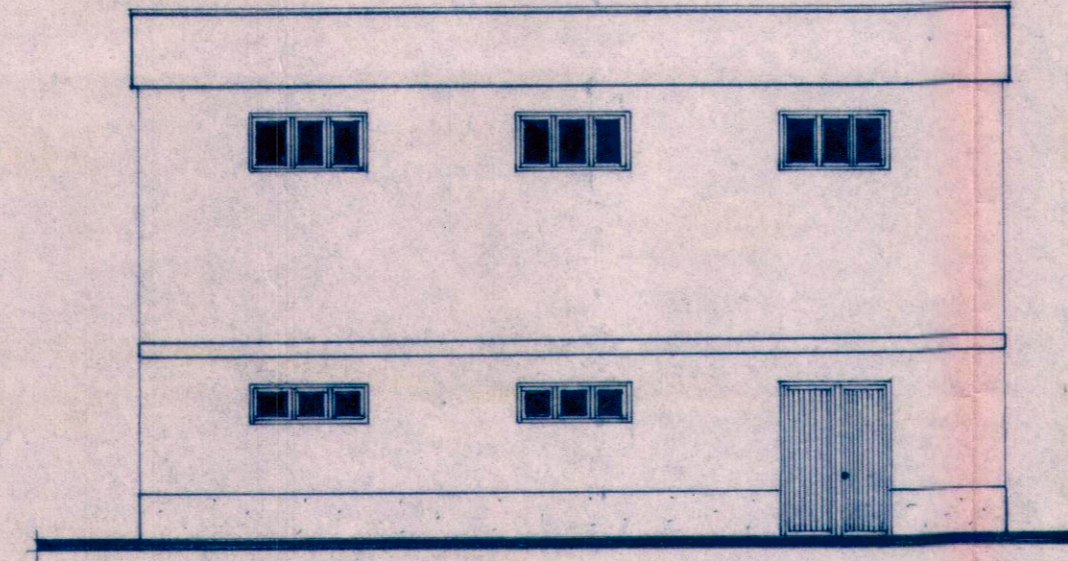
ORIGINAL



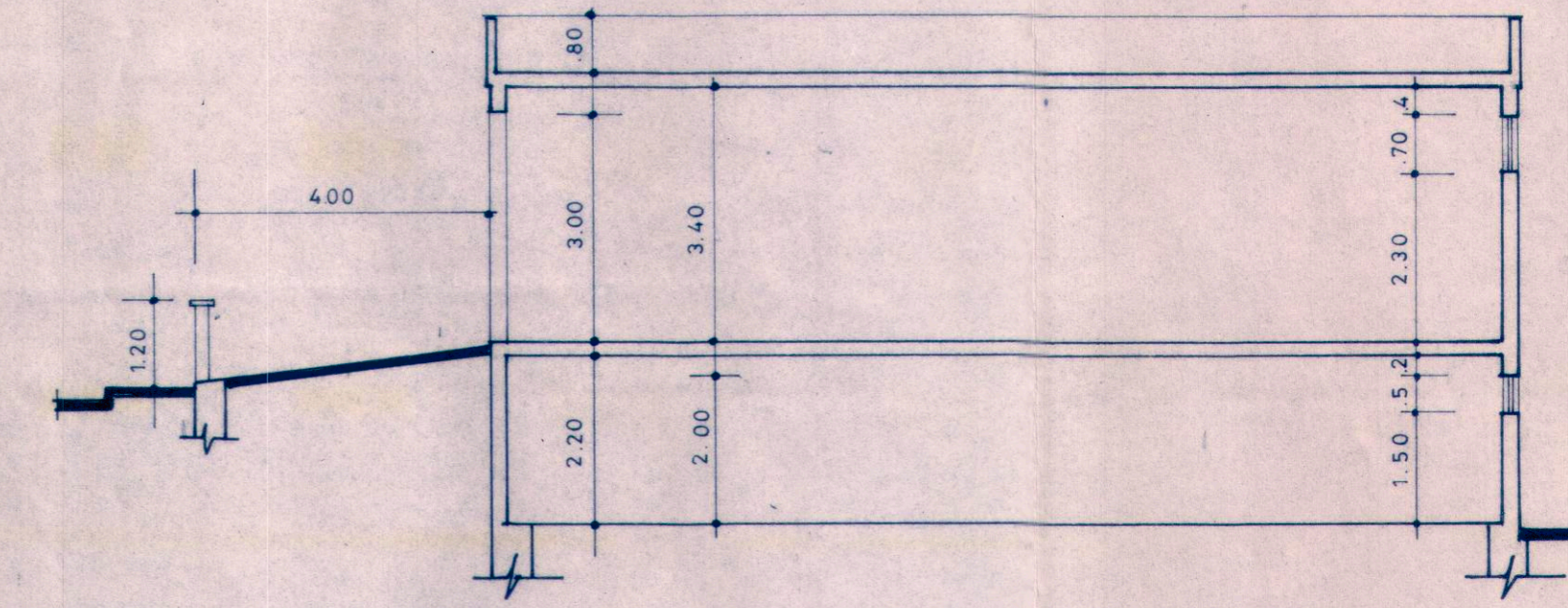
ALÇADO PRINCIPAL



ALÇADO L. DIREITO



ALÇADO POSTERIOR



CORTE A \* B

MUNICÍPIO DE ALENQUER  
SECRETARIA DE AGRICULTURA  
29 JUN 1965  
D. G. F. F. DOS S. T.

O TÉCNICO  
*Guilhermino Cardoso Rodrigues*

REG:  
GUILHERMINO CARDOSO RODRIGUES  
LOCAL:  
BAIRRO JOSÉ JOAQUIM TEIXEIRA - CHEGANÇAS  
LOTE Nº 12

F# 3

PROJECTO:  
A R M A Z É M

ESCALA 1:100 Nº 794